

DataTraveler® Locker+ G3 User Manual



Table of Contents

About This User Guide.....	3
System Requirements.....	3
Recommendations	3
Setup (Windows Environment).....	4
Device Initialization (Windows Environment)	5
USB-to-Cloud Initialization and Usage	9
Device Usage (Windows Environment)	11
Device Options (Windows Environment).....	12
Setup (Mac Environment)	14
Device Initialization (Mac Environment)	15
Device Usage (Mac Environment).....	19
Device Options (Mac Environment)	20
Help and Troubleshooting	22
Device Lockout	22
Forgot Password.....	23
Drive Letter Conflict (Windows Operating Systems)	24

About This User Guide

This user manual covers the DataTraveler® Locker+ G3 (referred to simply as DTL+ G3 from this point forward) based on the factory image with no implemented customizations.

System Requirements

PC Platform

- Pentium III (or faster) processor equivalent
- 15MB free disk space
- USB 2.0 / 3.0 port
- Two consecutive drive letters after the last physical drive*

PC Operating System Support

- Windows® 7 SP2
- Windows® Vista SP2
- Windows 8 / 8.1 (RT not supported)
- Active Internet Connection

Mac Platform

- 15MB free disk space
- USB 2.0 / 3.0 port

Operating System Support

- Mac OS X 10.7.x – 10.10x

Recommendations

To ensure there is ample power provided to the DTL+ G3 device, insert it directly into a USB port on your notebook or desktop, as seen in **Figure 1.1**. Avoid connecting the DTL+ G3 to any peripheral device(s) that may feature a USB port, such as a keyboard or USB-powered hub, as seen in **Figure 1.2**.

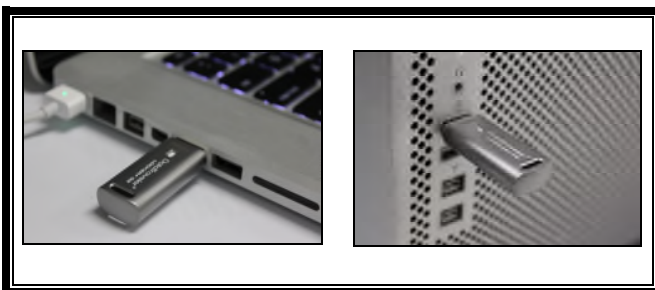


Figure 1.1 – Recommended Usage

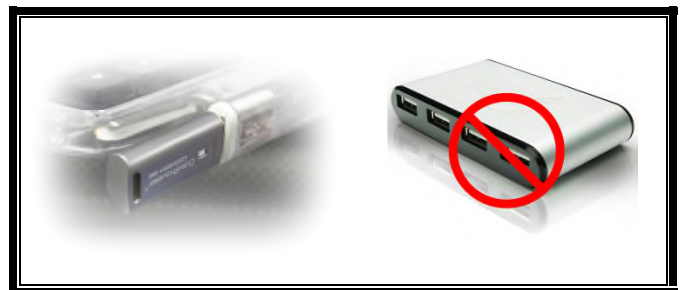


Figure 1.2 – Not Recommended

*Note: See 'Drive Letter Conflict' on page 22.

Setup (Windows Environment)

1. Insert the DTL+ G3 into an available USB port on your notebook or desktop and wait for Windows to detect it.
 - Windows XP users will receive a 'Found New Hardware' notification as seen in **Figure 2.1**.
 - Windows Vista/7 users will receive a device driver notification as seen in **Figure 2.2**.



Figure 2.1 – Found New Hardware (Windows XP)

Once the new hardware detection is complete, Windows will begin the initialization process.

- If the Windows autorun function is enabled, you can skip the next step and go to page 5 – **Device Initialization**.
- If the Windows autorun function is disabled, as it is in Windows 7 by default, you may see an AutoPlay window similar to the one in **Figure 2.3**.

2. Select the option 'Run DTLplus_Launcher.exe'.

If Windows does not AutoPlay, simply browse to the DVD-RW partition (**Figure 2.4**) and manually execute the DTLplus_Launcher program. This will also start the initialization process.

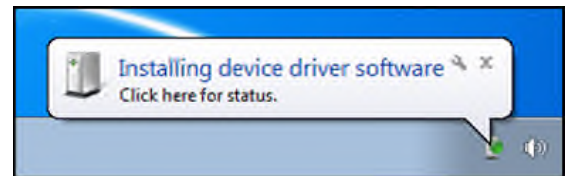


Figure 2.2 – Device Driver Installation (Windows Vista/7)

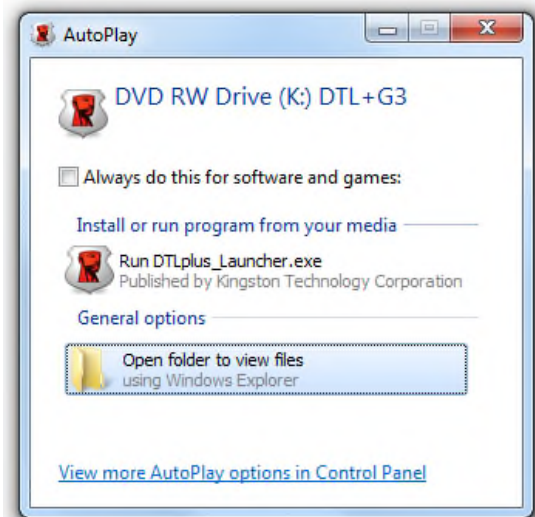


Figure 2.3 – AutoPlay Window (Windows Vista/7)

(Note: Menu options in the AutoPlay window may vary depending on what programs are currently installed on your computer. If enabled, AutoRun will start the initialization process automatically.)

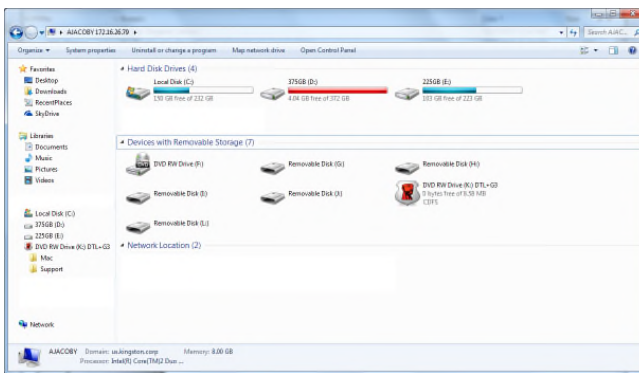


Figure 2.4 – DTL+ G3 Contents

Device Initialization (Windows Environment)

1. Select your language preference from the drop-down menu and click 'Next' (**Figure 3.1.**)



Figure 3.1 – Language Selection

2. Review the license agreement and click 'Next' (**Figure 3.2.**) (Note: You must accept the license agreement before continuing; otherwise the 'Next' button will remain disabled.)

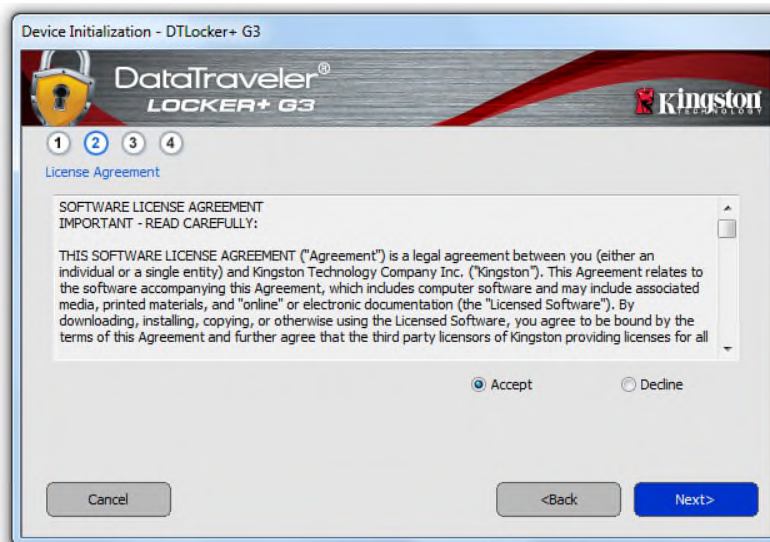


Figure 3.2 – License Agreement

3. Create a password to protect your data on the DTL+ G3. Enter it in the 'Password' field, then re-enter it in the 'Password Confirmation' field, as seen below in **Figure 3.3**. The password you create must meet the following criteria before the initialization process will allow you to continue:

1. Passwords must contain 6 characters or more (up to 16 characters.)
2. Passwords must contain three (3) of the following criteria options:
 - UPPER CASE, lower case, numeric, and/or special characters (!, \$, etc.)

You may also enter a password hint, but it is not a mandatory field. The hint field can be useful in providing a clue as to what the password is, should the password ever be forgotten. (*Note: The hint CANNOT be an exact match to the password.*)

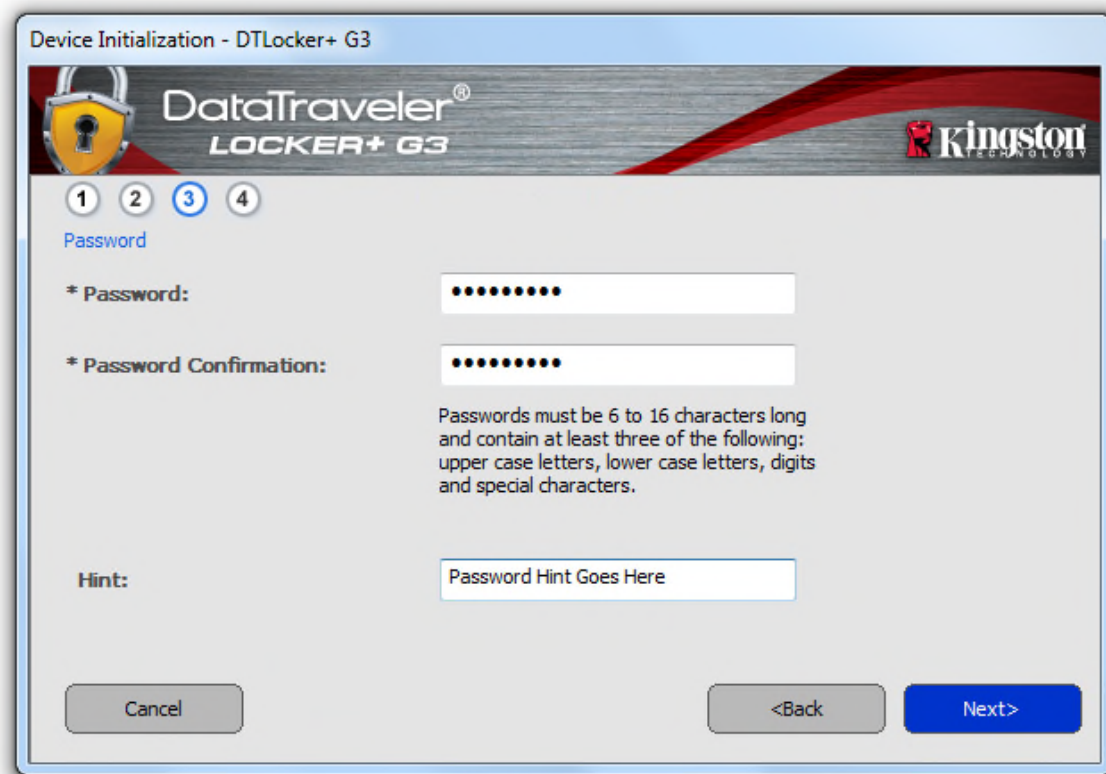


Figure 3.3 – Password Setup

4. Enter your contact information into the text boxes provided (see **Figure 3.4**) (Note: The information you enter in these fields may **NOT** contain the password string you created in Step 3. However, these fields are optional and can be left blank, if so desired.)

- The 'Name' field may contain up to 32 characters, but cannot contain the **exact** password.
- The 'Company' field may contain up to 32 characters, but cannot contain the **exact** password.
- The 'Details' field may contain up to 156 characters, but cannot contain the **exact** password.



Device Initialization - DTLocker+ G3

DataTraveler®
LOCKER+ G3

Kingston
TECHNOLOGY

1 2 3 4

Contact Information

Name: DTL+ G3 User

Company: Company Name

Details: Co. Details

Cancel <Back Finish

Figure 3.4 – Contact Information

5. Click 'Finish' to complete the device initialization process.

The DTL+ G3 will now format the secure data partition (**Figure 3.5**) and notify you when it is complete (**Figure 3.6**.)



Note: If operating under Windows XP in Non-Admin mode, the 'Format' routine will take longer than formatting in Admin mode.*

6. Click 'OK' to continue.

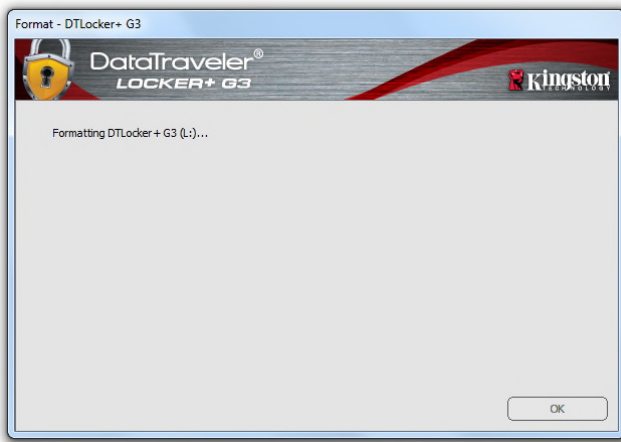


Figure 3.5 – Formatting DTL+ G3



Figure 3.6 – Format Complete

Initialization complete.

**Note: Times may vary based on system hardware and the capacity of the DTL+ G3 drive.*

USB ← → Cloud Initialization (PC Only)

Once the device has been initialized, the USB-to-Cloud application will appear as seen in **Figure 3.7** to the right. Please make sure you have a working Internet connection before you continue.

To proceed with the installation, click the green 'Accept' button in the bottom right-hand corner of the clevX window.

To decline the installation, click the red 'Decline' button in the bottom left-hand corner of the clevX window.

(Note: If you click the red 'Decline' button, it will cancel the USB-to-Cloud installation. In doing so, a special text file named 'USBtoCloudInstallDeclined.txt' is created on the data partition. The presence of this file will prevent the application from prompting you for the installation in the future.)

If the following Windows Security Alert window pops up during the initialization process, please click "Allow access" to continue (or create a Windows Firewall Exception) in order for the USB-to-Cloud application to continue.



Figure 3.7 – USB-to-Cloud



Figure 3.8 – Windows Security Alert

(Continued...) USB ← → Cloud Initialization (PC Only)

Once the installation has completed, you will see an application box with a list of options to choose from (for syncing your DataLocker+ G3 data.)

Select the cloud option you wish to use as your backup application and provide the necessary credentials required for authentication.

(Note: If you currently do not have an account set up with any of the cloud options listed, you may create one at this time, using your favorite Internet browser, and then completing this option afterwards.)

Once you've chosen a cloud option and authenticated to the corresponding service, the data on your DTL+ G3 Secure USB device will be sync'd automatically each time you log into the device.

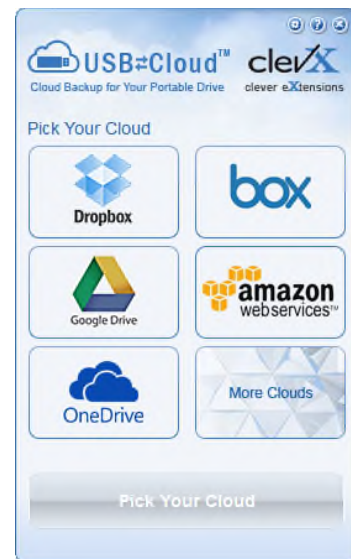


Figure 3.9 – Cloud Options

USB-to-Cloud Usage

The USB-to-Cloud application provides the following additional services:

- Pause Backup (Pauses a data backup)
- Restore (Restores data from the cloud to the device)
- Settings (Additional options for your data backup)
- Exit (Exits the USB-to-Cloud service)

In the 'Settings' menu, you can **1)** change which cloud service app you are currently using for backups; **2)** change the language you are currently using; **3)** select which files and/or folders you are backing up to the cloud; **4)** enable or disable Antivirus on the DTL+ G3; **5)** check for software updates; or **6)** reset the USB device.

(Note: If you reset (or format) the DTL+ G3, all data on the device will be lost. However, whatever data is stored in the cloud remains safe and intact.)

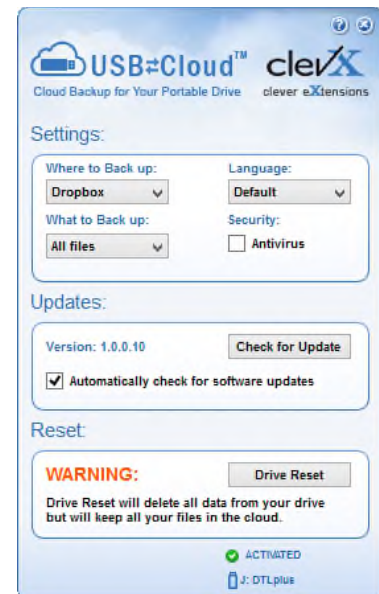


Figure 3.10 - Settings

Device Usage (Windows Environment)

Once the DTL+ G3 has been initialized, you can access the secure data partition and utilize the device options by logging into the device with your password. To do so, follow these steps:

1. Insert the DTL+ G3 into a USB port on your notebook or desktop and enter your password (see **Figure 4.1**.)
2. Once you've typed your password, click the 'Login' button to continue.
 - If the correct password is entered, the DTL+ G3 will unlock and you can begin using the device.
 - If an incorrect password is entered, an error message will appear just below the 'Hint' field, indicating a login failure (see **Figure 4.2**.)

During the login process, if a bad password is entered, you will be given another opportunity to enter the correct password; however, there is a built-in security feature that tracks the number of failed login attempts*. If this number reaches the pre-configured value of 10 failed attempts, the DTL+ G3 will lock and require a device format of the secure data partition prior to next use.



THIS MEANS THAT ALL DATA STORED ON THE DTL+ G3 WILL BE LOST.

For more details on this feature, see 'Device Lockout' on page 20.



Figure 4.1 – Login Window



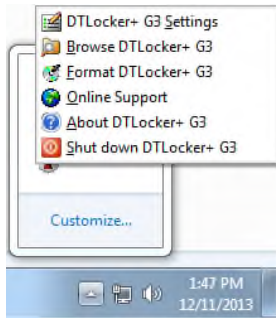
Figure 4.2 – Login Failure

**Note: Once you authenticate to the device successfully, the failed login counter will reset.*

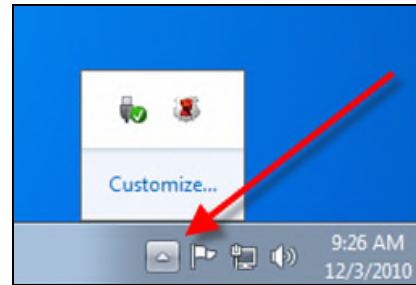
Device Options (Windows Environment)

While you are logged into the device, there will be a 'DTL+ G3' icon located in the right-hand corner of the Windows taskbar (**Figure 5.1.**) (Note: Windows 7/8.x users will need to click on the up-arrow button in the taskbar in order to access the 'DTL+ G3' icon (**Figure 5.2.**))

Clicking once on the DTL+ G3 icon will display the following menu:



**Figure 5.1 – DTL+ G3 icon in taskbar
(Windows XP users)**



**Figure 5.2 – DTL+ G3 icon in taskbar
(Windows 7/8/8.1 users)**

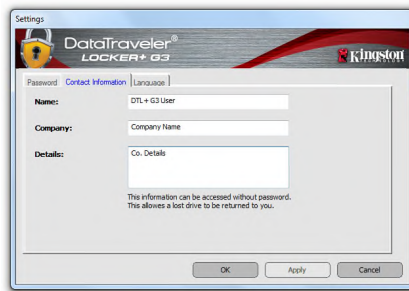
DTL+ G3 Settings

- Allows you to change your password and/or hint (**Figure 5.3**)
- Allows you to store username and password information (see **Page 11**)
- Allows you to add/view/change your contact information (**Figure 5.4**)
- Allows you to change your current language selection (**Figure 5.5**)

(Note: For security purposes, your current DTL+ G3 password is required to update and/or modify any of these settings.)



**Figure 5.3
Change Password**



**Figure 5.4
Contact Information**



**Figure 5.5
Select Language**

Browse DTL+ G3

- Allows you to browse the contents of the secure data partition while you are logged in

Format DTL+ G3*

- Allows you to format the secure data partition (Warning: All data will be erased.) (**Figure 5.7**)

Online Support (Requires Internet access)

- Opens your Internet browser and navigates to <http://www.kingston.com/support/> where you can access additional support information



Figure 5.7 – Format Warning

About DTL+ G3

- Provides specific details about the DTL+ G3, including Application and Firmware version information (**Figure 5.8**)

Shutdown DTL+ G3

- Properly shuts down the DTL+ G3, allowing you to safely remove it from your system

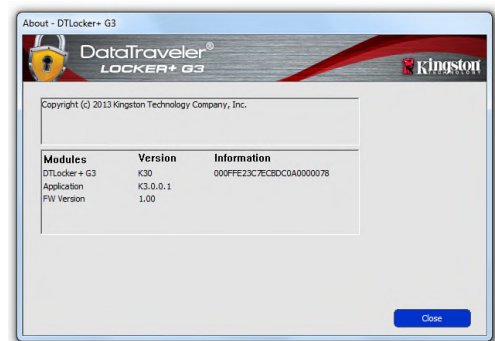


Figure 5.8 – About DTL+ G3

**Note: Your current DTL+ G3 password is required in Windows Vista, Windows 7, and Win 8*

-Windows Section Complete-

Setup (Mac Environment)

Insert the DTL+ G3 into an available USB port on your notebook or desktop and wait for the Mac operating system to detect it. When it does, you will see a DTLplus volume appear on the desktop, as seen in **Figure 6.1**.



Figure 6.1 – DTLplus

1. Double-click the DTL+ G3 DVD icon.
2. Double-click the Mac folder found in the window displayed in **Figure 6.2**.
3. Double-click the DTLplus application icon found in the window displayed in **Figure 6.3**. This will start the initialization process.

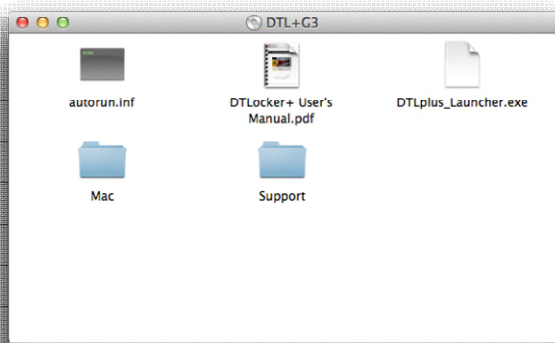


Figure 6.2 – DTL+ G3 Contents

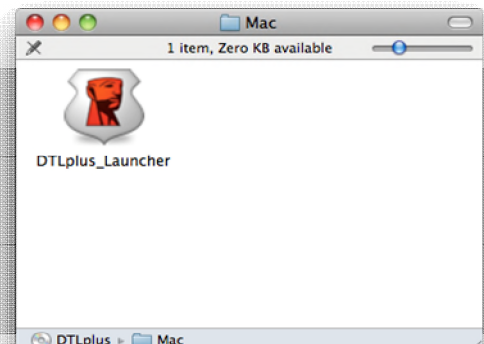
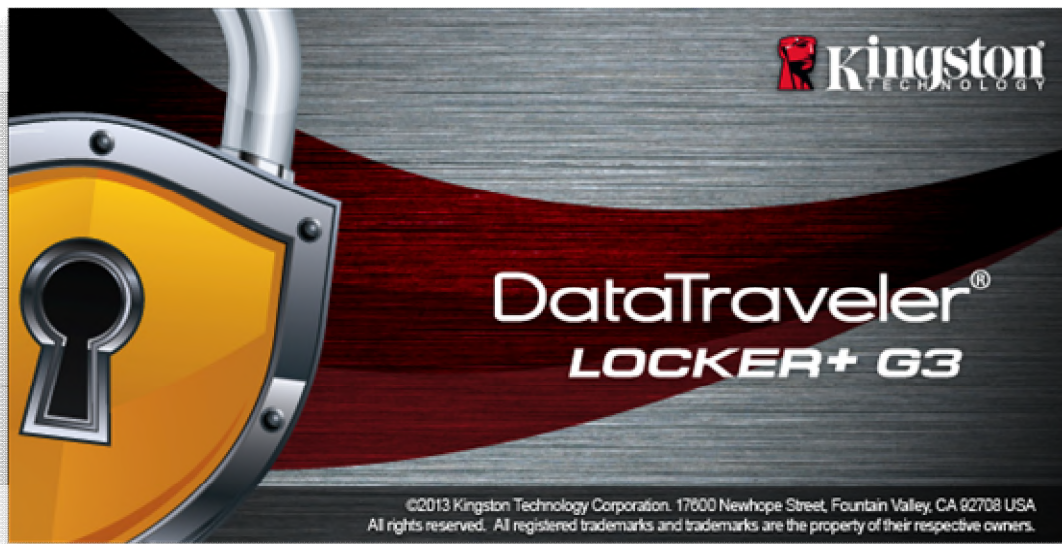


Figure 6.3 – DTL+ G3 Application



Device Initialization (Mac Environment)

1. Select your language preference from the drop-down menu and click 'Next' (**Figure 7.1.**)

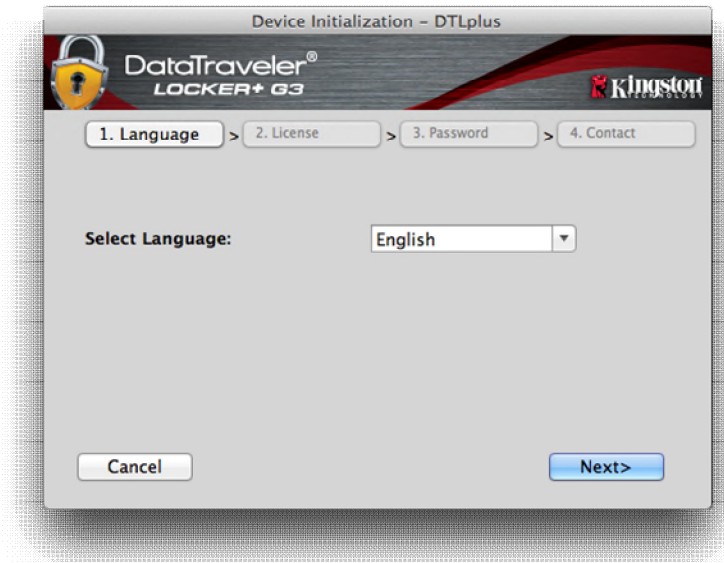


Figure 7.1 – Language Selection

2. Review the license agreement and click 'Next' (**Figure 7.2.**) (Note: You must accept the license agreement before continuing; otherwise the 'Next' button will remain disabled.)



Figure 7.2 – License Agreement

3. Create a password to protect your data on the DTL+ G3. Enter it in the 'Password' field, then re-enter it in the 'Password Confirmation' field, as seen below in **Figure 7.3**. The password you create must meet the following criteria before the initialization process will allow you to continue:

1. Passwords must contain 6 characters or more (up to 16 characters.)
2. Passwords must contain three (3) of the following criteria options:
 - UPPER CASE, lower case, numeric, and/or special characters (!, \$, etc.)

You may also enter a password hint, but it is not a mandatory field. The hint field can be useful in providing a clue as to what the password is, should the password ever be forgotten. (*Note: The hint CANNOT be an exact match to the password.*)



Device Initialization - DTLplus

DataTraveler[®]
LOCKER+ G3

Kingston

1. Language > 2. License > 3. Password > 4. Contact

* Password:

* Password Confirmation:

Passwords must be 6 to 16 characters long and contain at least three of the following: upper case letters, lower case letters, digits and special characters.

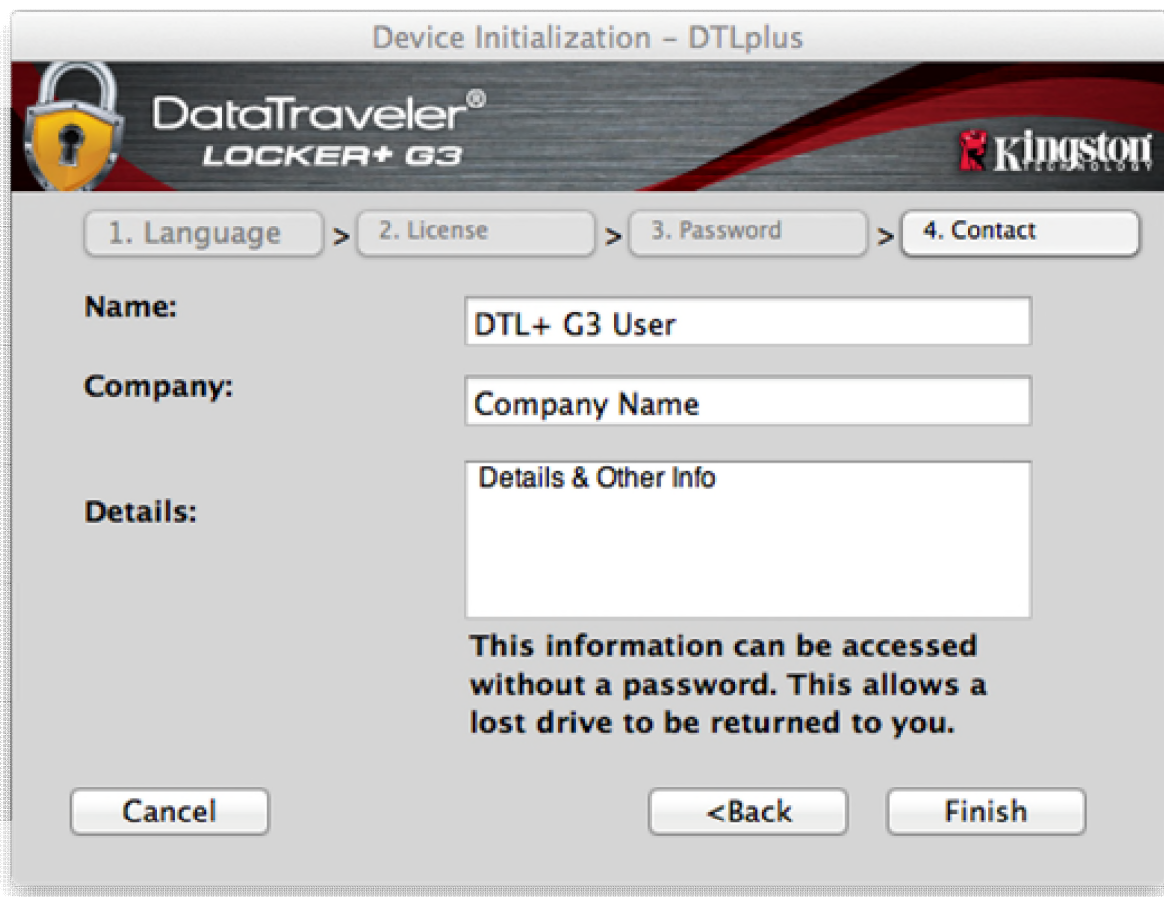
Hint: Pwd Hint Here

Cancel <Back Next>

Figure 7.3 – Password Setup

4. Enter your contact information into the text boxes provided (see **Figure 7.4**) (Note: The information you enter in these fields may **NOT** contain the password string you created in Step 3. However, these fields are optional and can be left blank, if so desired.)

- The 'Name' field may contain up to 32 characters, but cannot contain the **exact** password.
- The 'Company' field may contain up to 32 characters, but cannot contain the **exact** password.
- The 'Details' field may contain up to 156 characters, but cannot contain the **exact** password.



The screenshot shows a software window titled "Device Initialization - DTLplus". The window has a header with the DataTraveler Locker+ G3 logo and the Kingston Technology logo. Below the header is a progress bar with four steps: "1. Language", "2. License", "3. Password", and "4. Contact". The "4. Contact" step is currently selected. The main area contains three input fields: "Name:" with the text "DTL+ G3 User", "Company:" with the text "Company Name", and "Details:" with the text "Details & Other Info". Below these fields is a warning message: "This information can be accessed without a password. This allows a lost drive to be returned to you." At the bottom of the window are three buttons: "Cancel", "<Back", and "Finish".

Figure 7.4 – Contact Information

5. Click 'Finish' to complete the device initialization process.

The DTL+ G3 will now format the secure data partition (**Figure 7.5**) and notify you when it is complete (**Figure 7.6**.)

6. Click 'OK' to continue.



Figure 7.5 – Formatting DTLocker+ G3

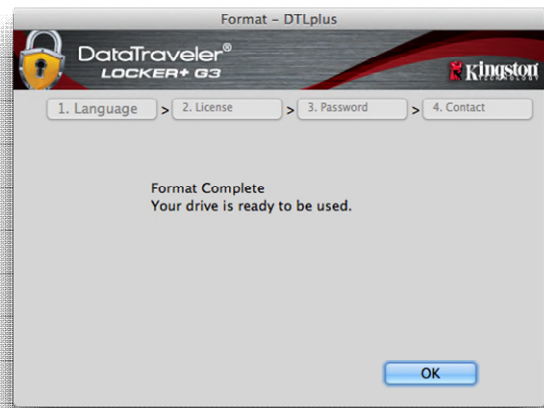



Figure 7.6 – Format Complete

Initialization complete.

Device Usage (Mac Environment)

Once the DTL+ G3 has been initialized, you can access the secure data partition and utilize the device options by logging into the device with your password. To do so, follow these steps:

1. Insert the DTL+ G3 into a USB port.
2. Double-click the DTL+ G3 volume icon 
3. Open the Mac folder and double-click the **DTLplus_Launcher** app.
4. Enter your password in the Login window textbox (see **Figure 8.1**.)
5. Once you've typed your password, click the 'Login' button to continue.
 - If the correct password is entered, the DTL+ G3 will unlock and you can begin using the device.
 - If an incorrect password is entered, an error message will appear just below the 'Hint' field, indicating a login failure (see **Figure 8.2**.)

During the login process, if a bad password is entered, you will be given another opportunity to enter the correct password; however, there is a built-in security feature that tracks the number of failed login attempts*. If this number reaches the pre-configured value of 10 failed attempts, the DTL+ G3 will lock and require a device format of the secure data partition prior to next use.

 **THIS MEANS THAT ALL DATA STORED ON THE DTL+ G3 WILL BE LOST.**

For more details on this feature, see 'Device Lockout' on page 22.

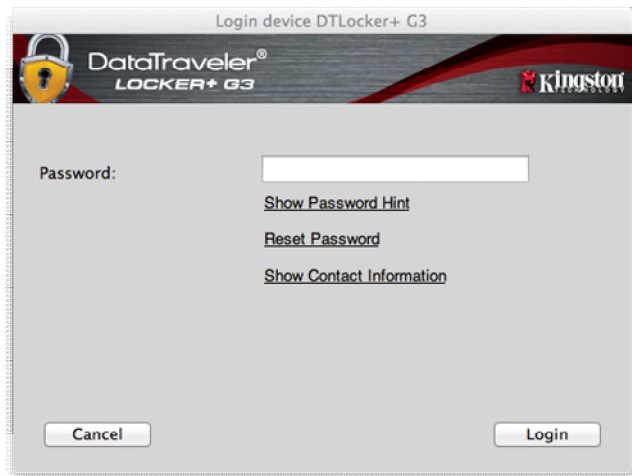


Figure 8.1 – Login Window

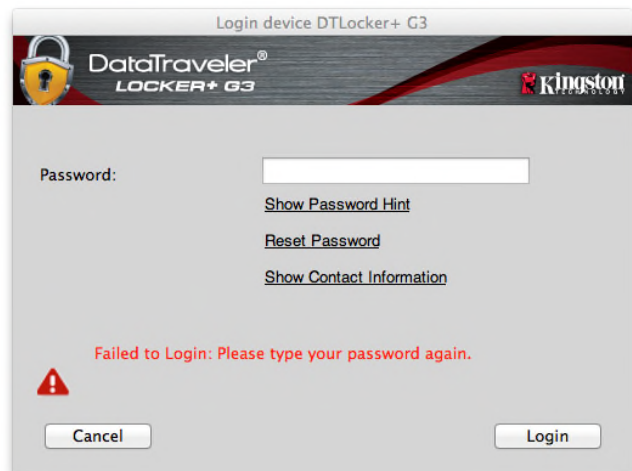


Figure 8.2 – Login Failure

***Note: Once you authenticate to the device successfully, the failed login counter will reset.**

Device Options (Mac Environment)

While you are logged into the device, there will be a 'DTLplus_Launcher' icon located in the Mac OS X Dock as seen in **Figure 9.1** below:



Figure 9.1 – DTL+ G3 Icon In Mac OS X Dock

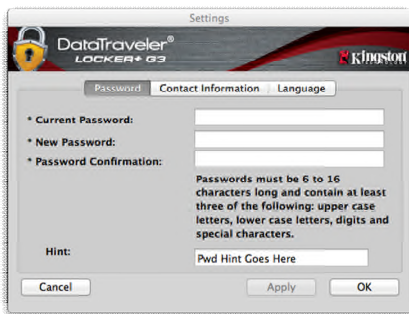
Holding down the 'control' key on your keyboard and clicking once on the 'DTLplus_Launcher' icon will display the menu shown in **Figure 9.2** to the right.



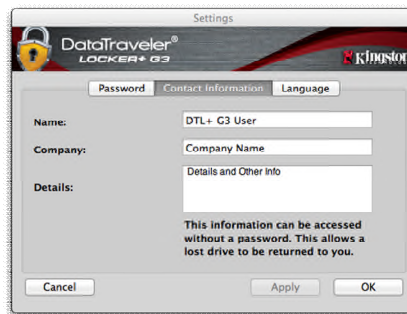
**Figure 9.2
DTL+ G3 Options**

DTL+ G3 Settings

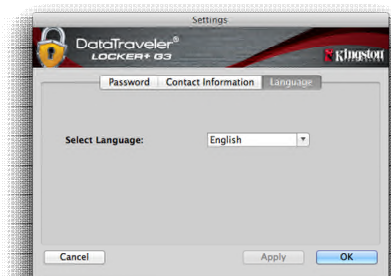
- Allows you to change your password and/or hint (**Figure 9.3**)
- Allows you to store username and password information (see **Page 21**)
- Allows you to add/view/change your contact information (**Figure 9.4**)
- Allows you to change your language preference (**Figure 9.5**)



**Figure 9.3
Change Password**



**Figure 9.4
Contact Information**



**Figure 9.5
Select Language**

(Note: For security purposes, your current DTL+ G3 password is required to update and/or modify any of these settings.)

Browse DTL+ G3

- Allows you to browse the contents of the secure data partition while you are logged in

Format DTL+ G3

- Allows you to format the secure data partition (Warning: All data will be erased.) (**Figure 9.7**)

Online Support (Requires Internet access)

- Opens your Internet browser and navigates to <http://www.kingston.com/support/> where you can access additional support information

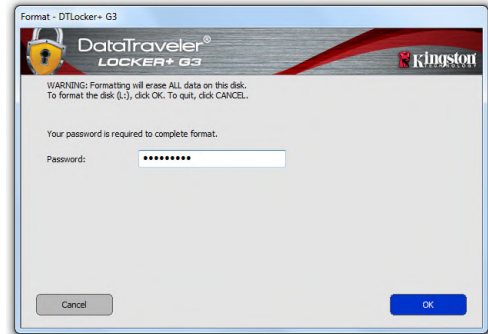


Figure 9.7 – Format Warning

About DTL+ G3

- Provides specific details about the DTL+ G3, including Application and Firmware version information (**Figure 9.8**)

Shutdown DTL+ G3

- Properly shuts down the DTL+ G3, allowing you to safely remove it from your system

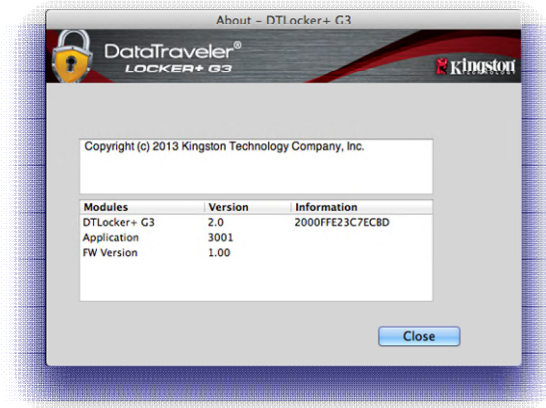


Figure 9.8 – About DTL+ G3

-Mac Section Complete-

Help and Troubleshooting

Device Lockout

The DTL+ G3 includes a security feature that prevents unauthorized access to the data partition once a maximum number of **consecutive** failed login attempts (*MaxNoA* for short) has been made; the default “out-of-box” configuration has a pre-configured value of 10 (no. of attempts.)

The ‘lock-out’ counter tracks each failed login and gets reset one of two ways: **1)** A successful login prior to reaching MaxNoA or **2)** reaching MaxNoA and performing a device format.*

If an incorrect password is entered, an error message will appear just below the ‘*Hint*’ field, indicating a login failure. **See Figure 10.1.**

If and when a 7th failed attempt is made, you will see an additional error message indicating you have 3 attempts left before reaching MaxNoA (which is set to 10 by default.) **See Figure 10.2.**

After a 10th failed login attempt, the DTL+ G3 will permanently block the data partition and require a device format prior to next use. This means that **all data stored on the DTL+ G3 will be lost** and you will need to create a new password.

This security measure limits someone (who does not have your password) from attempting countless login attempts and gaining access to your sensitive data.

If you are the owner of the DTL+ G3 and have forgotten your password, the same security measures will be enforced, including a device format.*

For more on this feature, see ‘*Forgot Password*’ on page 23.

**Note: A device format will erase ALL of the information stored on the DTL+ G3’s secure data partition.*

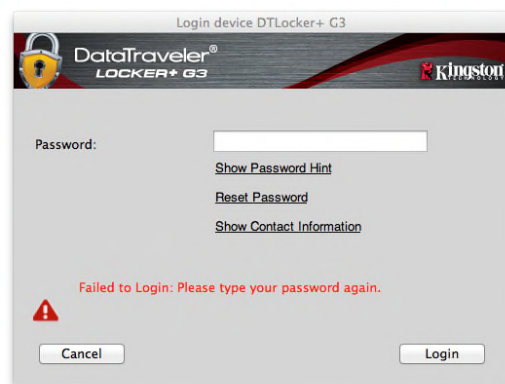


Figure 10.1 – Login Failure

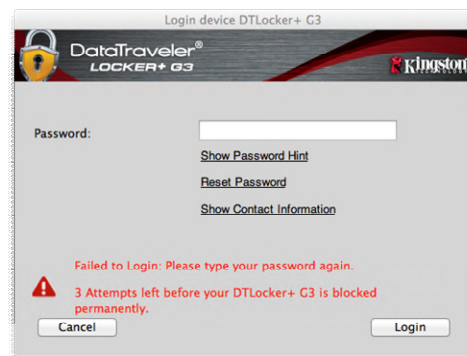


Figure 10.2 – 7th Login Failure

Forgot Password

If you forget your password, you can click on the *'Reset Password'* link that appears in the device login window when DTLplus_Launcher is executed (see **Figure 10.3**.)

This option will allow you to create a new password, but in order to protect the privacy of your data, the DTL+ G3 will be formatted. This means that all of your data will be erased in the process.*

When you do click on *'Reset Password'*, a message box (**Figure 10.4**) will appear and ask if you want to enter a new password prior to executing the format. At this point, you can either 1) click *'OK'* to confirm or 2) click *'Cancel'* to return to the login window.

If you opt to continue, you will be prompted to create a new complex password and a new hint. The hint is not a mandatory field, but it can be useful in providing a clue as to what the password is, should the password ever be forgotten.

(Note: The hint CANNOT be an exact match to the DTL+ G3 device password.)



Figure 10.3 – Forgot Password

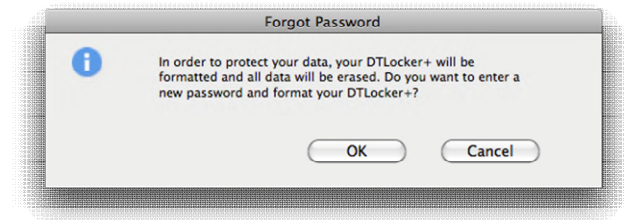


Figure 10.4 – Prompt Before Format

**Note: A device format will erase ALL of the information stored on the DTL+ G3's secure data partition.*

Drive Letter Conflict (Windows Operating Systems)

As mentioned in the 'System Requirements' section of this manual (on page 3), the DTL+ G3 requires two consecutive drive letters AFTER the last physical disk that appears before the 'gap' in drive letter assignments (see **Figure 10.5.**) This does NOT pertain to network shares because they are specific to user-profiles and not the system hardware profile itself, thus appearing available to the OS.

What this means is, Windows may assign the DTL+ G3 a drive letter that's already in use by a network share or Universal Naming Convention (UNC) path, causing a drive letter conflict. If this happens, please consult your administrator or helpdesk department on changing drive letter assignments in Windows Disk Management (administrator privileges required.)

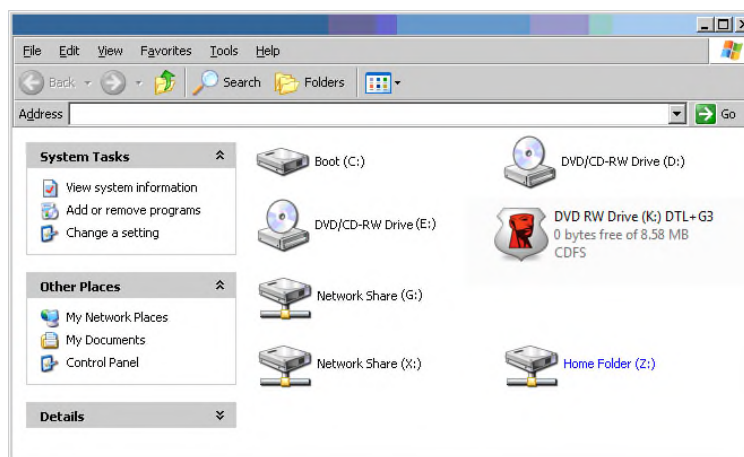


Figure 10.5 – My Computer

In this example, the DTL+ G3 uses drive F:, which is the first available drive letter after drive E: (the last physical disk before the drive letter gap.) Because letter G: is a network share and not part of the hardware profile, the DTL+ G3 may attempt to use it as its second drive letter, causing a conflict.

If there are no network shares on your system and the DTL+ G3 still won't load, it is possible that a card reader, removable disk, or other previously-installed device is holding on to a drive-letter assignment and still causing a conflict.

Please note that Drive Letter Management, or DLM, has improved significantly in Windows XP SP3, Vista, and 7, so you may not come across this issue, but if you are unable to resolve the conflict, please contact Kingston's Technical Support Department for further assistance.

